



Ground & second floor offices
2,110 & 2,358 sq ft (196.02 & 219 sq m)

- Newly refurbished, high specification offices including comfort cooling
- Close proximity to Norwich International Airport and the Northern Distributor Road
- Car parking at 1:263 sq. ft. plus overflow

**JOSEPH KING HOUSE,
HORSHAM ST FAITH, NORWICH, NR10 3JU**

TO LET

Description

Joseph King House is located in a prominent position at the entrance of Abbey Farm Commercial Park in Horsham St Faith. The building offers high quality, open plan office accommodation on 3 floors, with on-site car parking and landscaped surrounds.

Location

Horsham St Faith is to the north of Norwich just off the main A140 trunk road, just beyond Norwich International Airport intersected by the Northern Distributor Route (A1270).

The Property

The property has a communal entrance with an 8-person lift to all floor, there are WCs on all floors.

The ground floor suite occupies the western end of the property and is mainly open plan office space. There is a sizeable meeting room, kitchen break area, store and server room in addition.

The second-floor suite is within the eaves of the building and has dormer and velux windows. It has two entrances, a meeting room and teapoint.

Specification

The specification provided is detailed below:

- Fully accessible raised floors with new carpets
- Perimeter trunking
- Suspended ceilings with new LED light
- Gas central heating
- Comfort cooling

Accommodation

The property has been measured in accordance with the RICS Code of Measuring Practice and the following net internal floor areas are provided:

	Sq. Ft.	Sq. M.	Parking
GF Suite 1	2,358	219.06	9
SF Suite 7/8	2,110	196.02	8
Total	4,468	415.09	17

There is overflow parking in addition to the spaces listed.

Local Facilities

Horsham St Faith offers various amenities within a five-minute walk, including a post office, a village shop and a public house. A regular bus service runs to and from Norwich.

Tenure

New effectively full repairing and insuring leases are available on terms to be agreed.

Rental & Service Charge

Quoting rent provided on request.

A service charge contribution for the maintenance of common parts and landscaping areas will be levied.



Business Rates

According to the Valuation Office Agency website the Rateable Values and Rates Payable (24/25) are as follows:

Ground Floor (Suite 1)	£31,750/	£15,843
Second Floor (Suite 7/8)	£29,000 /	£14,471

Contact Broadland District Council for further information on 01603 431 133.

Energy Performance Certificate (EPC)

The building has an EPC asset rating of 73 which is in band C.

Enquiries

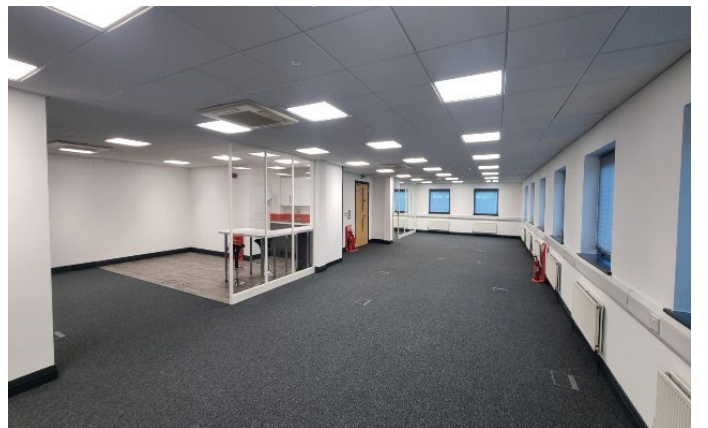
Chris Squirrell
01603 229 323

chris.squirrell@bidwells.co.uk

William Jones
01603 229 321

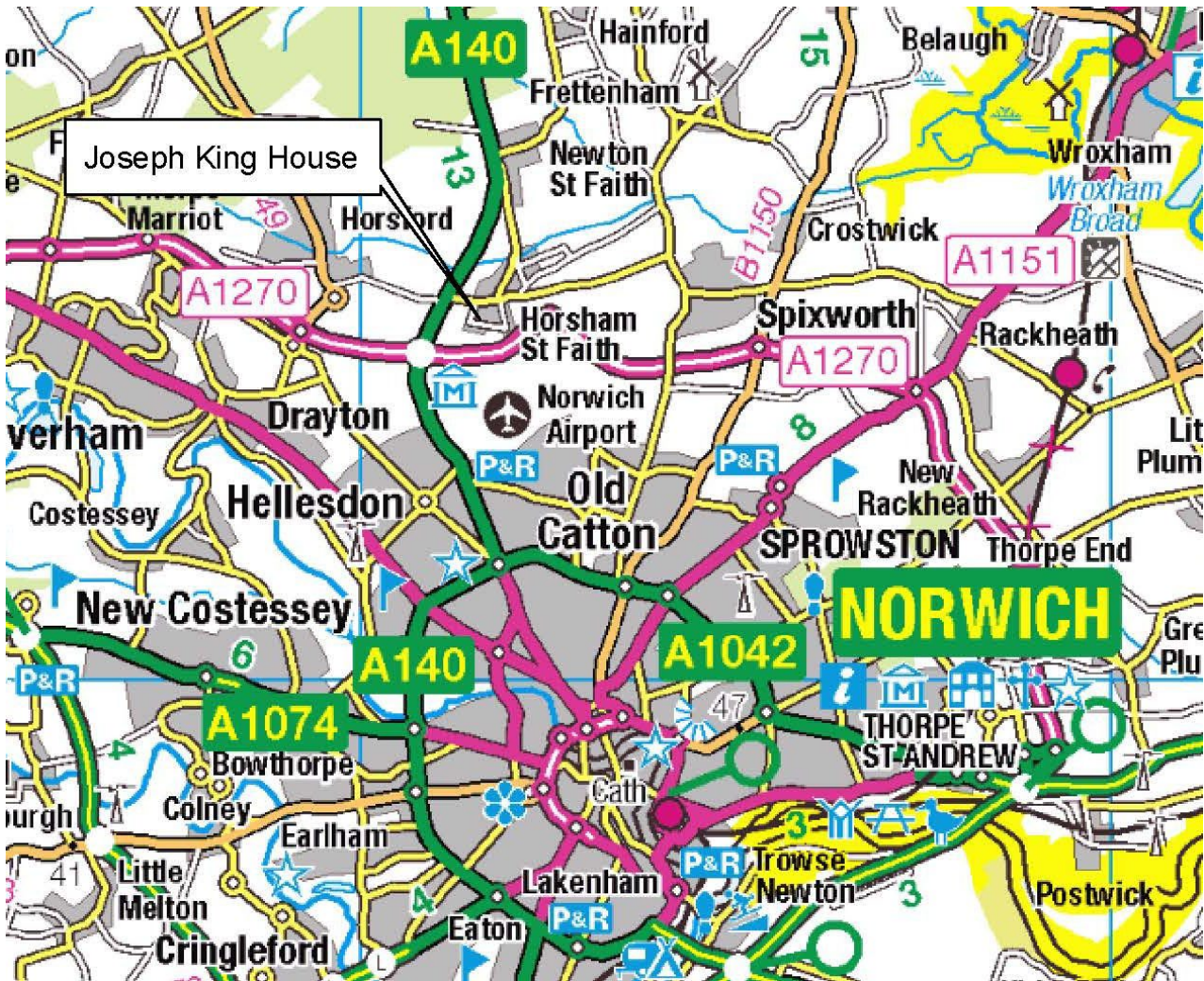
william.jones@bidwells.co.uk

Ground floor



Second floor





Important Notice

Bidwells LLP act for themselves and for the vendors/landlords of this property, whose agents they are, give notice that: Nothing contained in these particulars or their contents or actions, both verbally or in writing, by Bidwells LLP form any offer or contract, liability or implied obligation to any applicants, viewing parties or prospective purchasers of the property to the fullest extent permitted by law and should not be relied upon as statements or representations of fact. No person in the employment of Bidwells LLP or any joint agents has the authority to make or give any representation or warranty whatever in relation to this property. Any areas of measurements or distances are approximate. The text, photographs and plans are for guidance only, may not be to scale and are not necessarily comprehensive. No assumptions should be made that the property has all necessary planning, building regulation or other consents. Bidwells LLP has not carried out a survey, nor tested the services, appliances, or facilities. Purchasers must satisfy themselves by inspection or otherwise. All rentals and prices are quoted exclusive of VAT unless otherwise stated. Prospective purchasers and tenants will be asked to produce identification of the intended purchaser/tenant and other documentation in order to support any conditional offers submitted to the vendors. Bidwells LLP accepts no liability of any type arising from your delay or other lack of co-operation. We may hold your name on our database unless you instruct us otherwise. OS licence no. ES 100017734. © Copyright Bidwells LLP 2017. Bidwells LLP is a limited liability partnership registered in England and Wales (registered number OC 344553). Registered office is Bidwells House, Trumpington Road, Cambridge CB2 9LD where a list of members is available for inspection. Your statutory rights are not affected by this notice