



BUILDING 4100 ARC OXFORD

OX4 2GX

8,152 SQ FT

FITTED LABORATORY
WITH OFFICES

ARC.

INTRODUCTION

ARC Oxford is home to a thriving community of world-changing companies. Find outstanding lab, co-working, advanced manufacturing and office space, fabulous food and drink, and a green, energising campus environment. All a few minutes bike, boat or stroll from Oxford's world-class research institutes, teaching hospitals and universities.



ARC Oxford is set to grow 750,000 sq ft of brand new science-ready space — offices, labs, cleanrooms and cutting-edge R&D facilities — will soon evolve the cluster into a world-class environment for science and innovation. It's an investment in ARC's future, Oxford's continued position as a global centre of invention, and the UK's ambition to become a science superpower.



BUILDING 4100 AT A GLANCE

- 8,152 sq ft
- Fitted laboratory with offices
- Vulcathene drainage
- Vinyl floors
- Benching
- CAT 5 water installation
- Wipeable ceiling tiles
- LED lighting
- Showers
- Passenger lift
- 42 parking spaces
- Available now

CITY LOCATION

AN INTEGRAL PART OF OXFORD'S WORLD-FAMOUS INNOVATION ECOSYSTEM

OXFORD

The city of Oxford is a life science superpower connecting talent to global impact.

- 193 Oxford University spin outs – the highest intensity in the UK averaging over 17 spin outs per year since 2011*
- University of Oxford named number 1 university in the world 7 years running**
- Oxfordshire is home to more than 40,000 active companies
- Over £1.4 billion of funding raised by Oxford spinouts in 2021

*<https://www.ox.ac.uk/>

**According to TheTimes Higher Education (THE) World University Rankings 2023

CONNECTIVITY



ARC OXFORD BUILDING 4100

Connected to England's major cities and international transport hubs:

-  Oxford Airport – 20 mins by car
-  Heathrow Airport – 45 mins by car
-  London Paddington – 80 mins by train
-  Birmingham Snow Hill – 70 mins by train
-  ARC Clusters & Harwell



BUILDING SPECIFICATION

Laboratory

Building 4100 comprises a prominently located, detached building totalling 8,152 sq ft, located at the heart of ARC Oxford. The property will be comprehensively refurbished to provide fitted CL2 laboratory and office accommodation.

Available now.



Fitted office accommodation



Fitted lab accommodation



Vulcathene drainage



Vinyl floors



Benching



CAT 5 water installation



Wipeable ceiling tiles



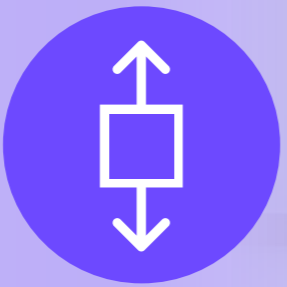
LED lighting



Raised access floors



Showers



Passenger lift

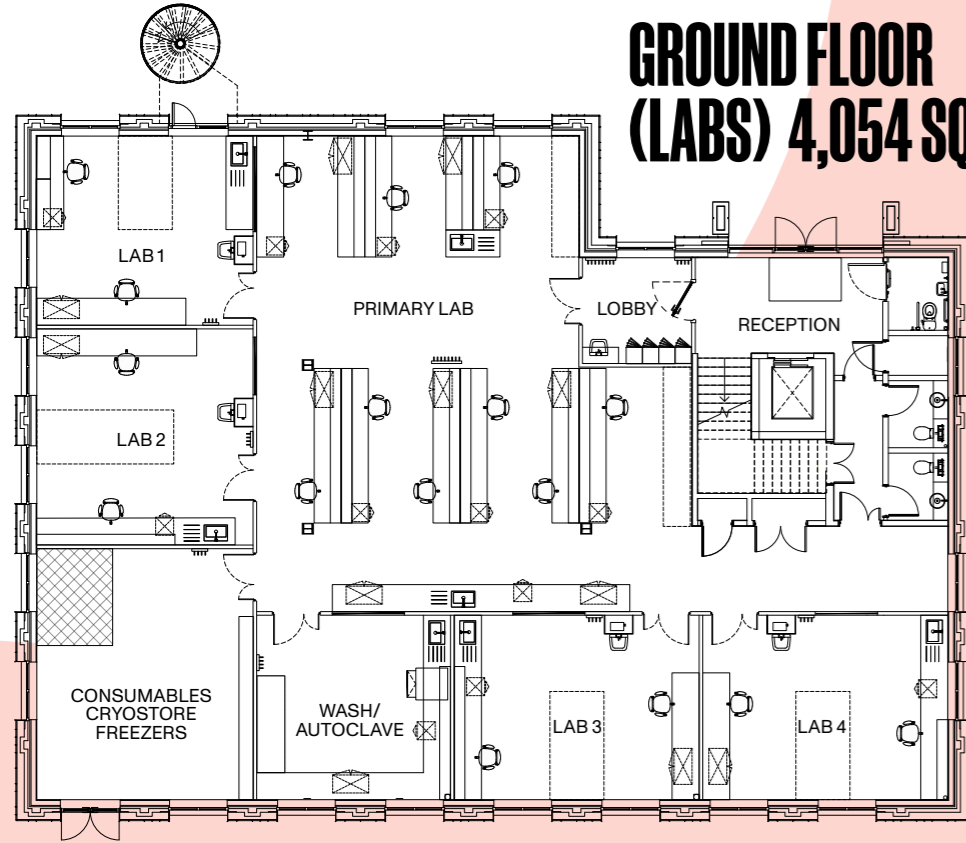


42 car parking spaces

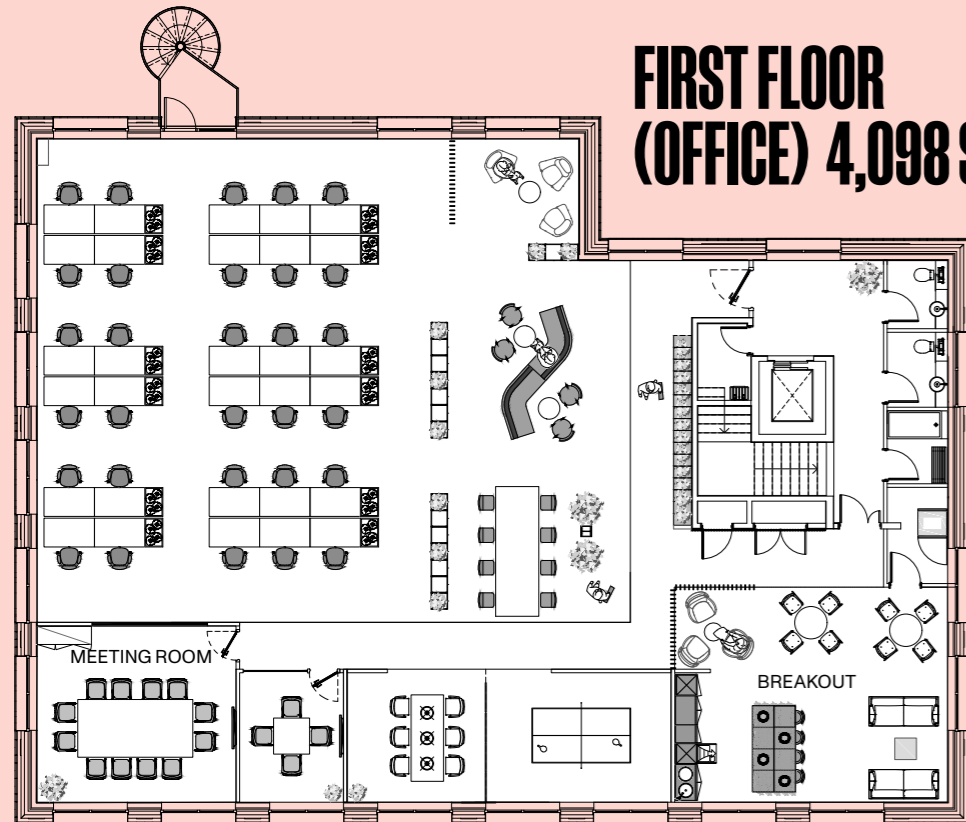


FLOORPLANS

GROUND FLOOR (LABS) 4,054 SQ FT



FIRST FLOOR (OFFICE) 4,098 SQ FT



CAMPUS-WIDE AMENITIES



OXFORD FACTORY

A cafe and restaurant with a great selection of food and drink for whatever the occasion. If its just a quick coffee or a bigger lunch with a number of colleagues.



SHOPPING

Shopping opportunities of Oxford retail park including M&S, Tesco and Boots



NURSERY

Bright Horizons Day nursery



HOTEL

Premier Inn on-site



DAVID LLOYD GYM

Spa with steam room and sauna

- 6 Tennis courts (indoor and outdoor)
- Fully equipped gym
- Indoor pool
- Exercise classes



THE MARKET PLACE

A community square with a landscaped open lawn area hosting outdoor events all year round

OXFORD WORKS

A collaborative workspace to develop ideas, network and come together

- Hire a desk from 1 hour
- Quiet spaces for focused work
- Board rooms
- Seminar theatre
- Pool table

TESTIMONIALS

"It's been a great experience working with ARC to accommodate Perspectum's Oxford based staff into this newly renovated and modern space. We are looking forward to moving in so that our staff can benefit from all the Park has to offer."

Perspectum Diagnostics



"Our rapidly expanding business needed to acquire fully fitted lab space within a very short timeframe. The team at ARC Oxford stepped up to this challenge, finishing on time and to a very high standard – we are delighted with the result."

Evox Therapeutics



"ARC Oxford is already home to our manufacturing facility known as Oxbox, which is in operation for our viral vector manufacturing activities and also supporting the manufacturing of a COVID-19 vaccine candidate. In March 2020, as our activities and workforce expanded, we took the decision to relocate our corporate headquarters team from our existing HQ to a new office location on the Park. ARC have helpfully accommodated all of our commercial requirements with the new office and we are delighted with the quality of the building and the wider environment."

Oxford BioMedica



A GROWING INNOVATION CAMPUS

ARC Oxford is a nurturing environment for a community of extraordinary organisations making history at the cutting edges of their industries.



JOIN THE ARC COMMUNITY

Being at ARC Oxford connects you with a community within the Advanced Research Clusters (ARC) portfolio of over 10,000 people and 300+ business, research and academic organisations, spanning life science, healthtech, deeptech, clean energy and digital/AI.

Backed by Brookfield, ARC exists to create world leading clusters for science, technology and innovation. Our community has exclusive benefits including events, summits, training, profile and access to space for away days and science sprints. Our portfolio includes the Harwell campus, ARC Oxford, ARC West London in Hammersmith and ARC Uxbridge close to Heathrow, and we will be investing in adding millions of sq ft over the next few years.

CONNECT WITH THE WIDER ARC COMMUNITY, ITS INFRASTRUCTURE AND EVENTS

HARWELL

Oxfordshire

The UK's leading science and innovation campus.



ARC West London

A transforming riverside home for UK life science in Hammersmith.



ARC Uxbridge

A centre for innovation within London's green belt and close to Heathrow.



CONTACT

DEVELOPER

ARC

David Williams

M: +44 (0)7443 887 500

E: david.williams@arcgroup.io

Dan Williams

M: +44 (0)7795 331925

E: dan.williams@arcgroup.io

Will Crane

M: +44 (0)7503 211147

E: will.crane@arcgroup.io

www.arcgroup.io

LETTING AGENTS

JLL

Paddy Shipp

T: +44 (0)74691 55531

E: paddy.shipp@eu.jll.com

Bridget Partridge

T: +44 (0)7921 309816

E: bridget.partridge@eu.jll.com

Matthew Symons

T: +44 (0)7928 501324

E: matthew.symons@jll.com

www.jll.co.uk

Bidwells

Duncan May

M: +44 (0)7879 883886

E: duncan.may@bidwells.co.uk

Rob Beatson

M: +44 (0)7976 590996

E: robert.beatson@bidwells.co.uk

www.bidwells.co.uk

CBRE

Richard Venables

T: +44 (0)7816 491860

E: richard.venables@cbre.com

Kevin Wood

T: +44 (0)790 058 4150

E: kevin.wood@cbre.com

Charlotte Reaney

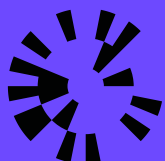
T: +44 (0)784 168 4842

E: charlotte.reaney@cbre.com

www.cbre.com

Misrepresentation Act

Advanced Research Clusters Ltd or JLL, CBRE and Bidwells give notice that these property particulars are provided as a general outline for guidance only. Intending purchasers or tenants should not rely on them as statements or representations of fact, but must satisfy themselves by inspection or otherwise as to their accuracy. As such, it does not constitute or form part of a contract. No person in the employ of Advanced Research Clusters Ltd or JLL, CBRE and Bidwells as representing agents of the property displayed has the authority to make or give any representation or warranty in relation to the property. Unless otherwise stated, all rents and prices quoted in these property particulars are exclusive of VAT which may be payable in addition to the amount quoted. Subject to contract. January 2024



ARC
Oxford