

ASHDOWN
4 bedroom home



CGIs are indicative only and elevations are subject to change, external finishes and features may vary.

ASHDOWN

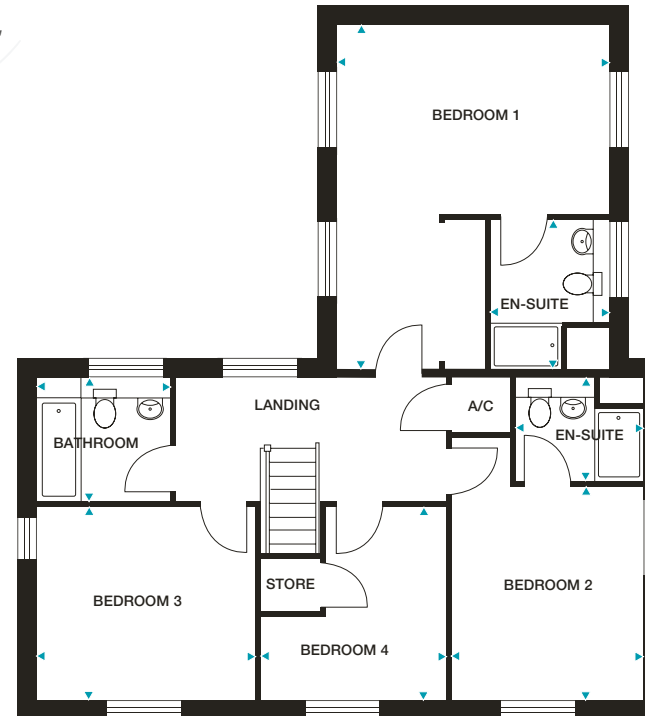
4 bedroom home

Plots 15, 21, 25,
92, 93 and 104



GROUND FLOOR

- Kitchen** 4450mm x 3460mm (max) 14'7" x 11'4" (max)
- Living Room** 5240mm x 3540mm (max) 17'2" x 11'8" (max)
- Dining/Family Room** 5240mm x 4040mm 17'2" x 13'3"
- Utility Room** 4450mm x 2140mm (max) 14'7" x 7'0" (max)
- Cloaks** 2060mm x 1750mm (max) 6'9" x 5'9" (max)



FIRST FLOOR

- Bedroom 1** 4450mm x 3100mm 14'7" x 10'2"
- En-Suite 1** 2500mm x 1950mm (max) 8'2" x 6'5" (max)
- Bedroom 2** 3490mm x 3140mm (max) 11'5" x 10'4"
- En-Suite 2** 2100mm x 1650mm (max) 6'11" x 5'5" (max)
- Bedroom 3** 3570mm x 3140mm 11'9" x 10'4"
- Bedroom 4** 3140mm x 3050mm (max) 10'4" x 10'0" (max)
- Bathroom** 2150mm x 2000mm (max) 7'1" x 6'7" (max)

Please note: Plots 15 and 93 are handed.

Dimensions stated are within 50mm (2") but should not be used as a basis for furnishings, furniture or appliance spaces etc. Dimensions for such purposes must be verified against actual site measurements. Please note the handing of plots may vary from the floor plans shown. Please check individual plot details with our sales team.