

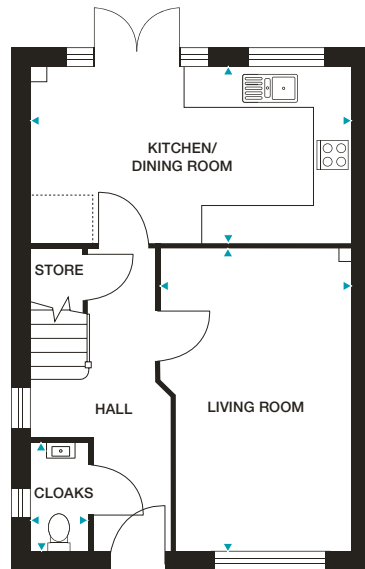
LANSDOWN
3 bedroom home



LANSDOWN

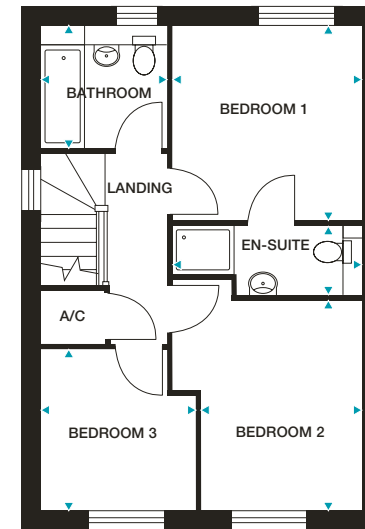
3 bedroom home

Plots 7, 8, 9, 10, 11, 12, 13, 14, 28, 29, 31, 32, 43, 44, 47, 48, 59, 60, 89 and 90



GROUND FLOOR

Kitchen/Dining Room 5240mm x 2870mm (max) 17'3" x 9'5" (max)
Living Room 4980mm x 3140mm (max) 16'4" x 10'4" (max)
Cloaks 1760mm x 910mm (max) 5'9" x 3'0" (max)



FIRST FLOOR

Bedroom 1 3180mm x 3080mm 10'5" x 10'1"
En-Suite 3080mm x 1120mm (max) 10'1" x 3'8" (max)
Bedroom 2 3460mm x 2620mm 11'4" x 8'7"
Bedroom 3 2630mm x 2530mm (max) 8'8" x 8'4" (max)
Bathroom 2070mm x 1970mm (max) 6'9" x 6'6" (max)

Please note: Plots 8, 10, 12, 14, 28, 32, 44, 48, 60 and 90 are handed.

Dimensions stated are within 50mm (2") but should not be used as a basis for furnishings, furniture or appliance spaces etc. Dimensions for such purposes must be verified against actual site measurements. Please note the handing of plots may vary from the floor plans shown. Please check individual plot details with our sales team.

LOVELL
HOMES