

OSBOURNE
3 bedroom home

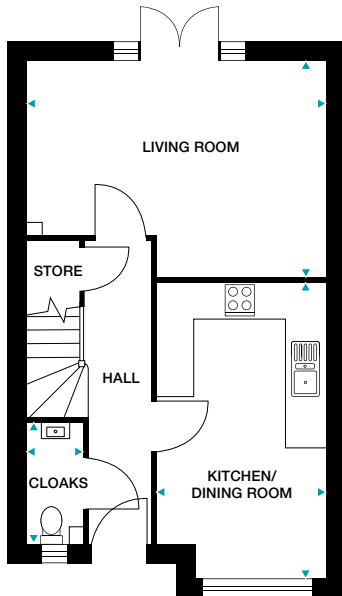


CGIs are indicative only and elevations are subject to change, external finishes and features may vary.

OSBOURNE

3 bedroom home

Plots 2, 3, 4, 5, 96 and 97



GROUND FLOOR

Kitchen/Dining Room

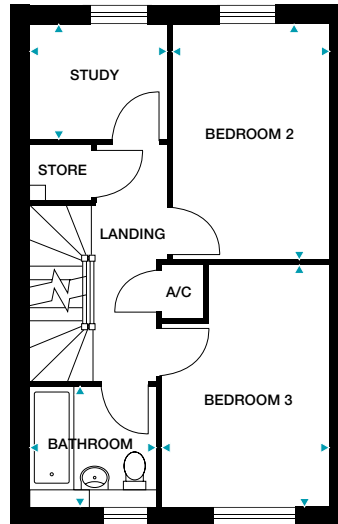
4850mm x 2750mm (max) 15'11" x 9'0" (max)

Living Room

4910mm x 3560mm (max) 16'1" x 11'8" (max)

Cloaks

1970mm x 910mm (max) 6'6" x 3'0" (max)



FIRST FLOOR

Study

2240mm x 1870mm 7'4" x 6'2"

Bedroom 2

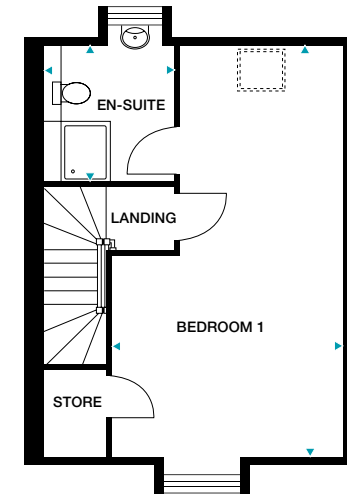
3870mm x 2570mm 12'9" x 8'5"

Bedroom 3

3980mm x 2750mm (max) 13'1" x 9'1" (max)

Bathroom

2050mm x 1970mm (max) 6'9" x 6'6" (max)



SECOND FLOOR

Bedroom 1

6960mm x 3800mm (max) 22'10" x 12'6" (max)

En-Suite

2370mm x 2120mm (max) 7'9" x 6'11" (max)

Please note: Plots 3, 5 and 97 are handed.

Dimensions stated are within 50mm (2") but should not be used as a basis for furnishings, furniture or appliance spaces etc. Dimensions for such purposes must be verified against actual site measurements. Please note the handing of plots may vary from the floor plans shown. Please check individual plot details with our sales team.

LOVELL
HOMES