

QUEENSWOOD  
4 bedroom home

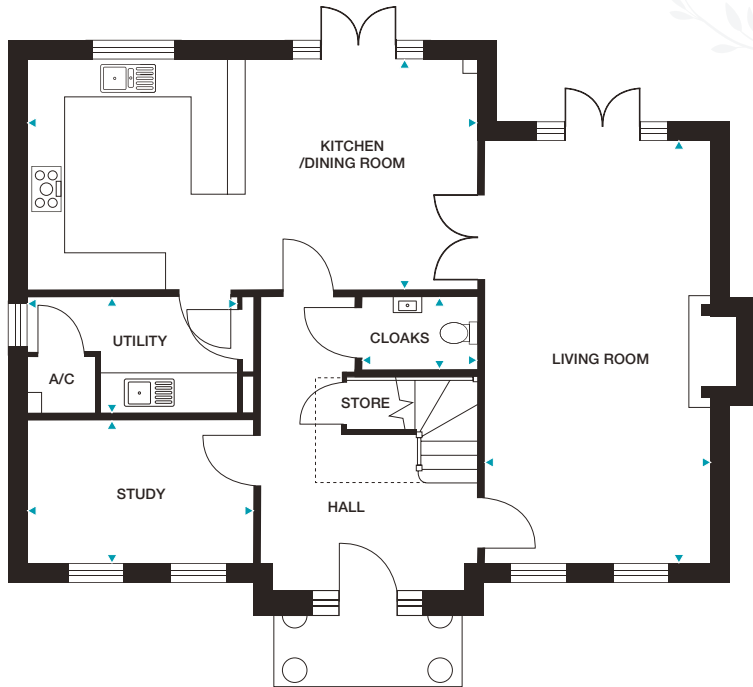


CGIs are indicative only and elevations are subject to change, external finishes and features may vary.

# QUEENSWOOD

## 4 bedroom home

Plots 24, 94, 105 and 106



GROUND FLOOR

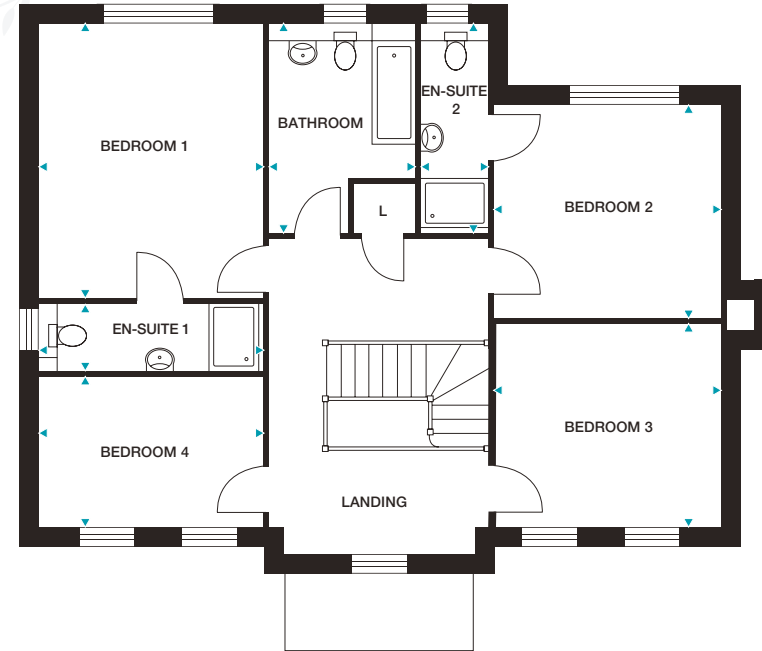
**Kitchen/ Dining Room** 7380mm x 3770mm (max) 24'3" x 12'5" (max)

**Living Room** 6930mm x 3670mm 22'9" x 12'1"

**Study** 3700mm x 2320mm 12'2" x 7'7"

**Utility Room** 3700mm x 1880mm (max) 12'2" x 6'2" (max)

**Cloaks** 1860mm x 1160mm (max) 6'1" x 3'10" (max)



FIRST FLOOR

**Bedroom 1** 4540mm x 3690mm 14'11" x 12'1"

**En-Suite 1** 3600mm x 1110mm (max) 11'0" x 3'8" (max)

**Bedroom 2** 3730mm x 3500mm 12'3" x 11'6"

**En-Suite 2** 3350mm x 1100mm (max) 11'0" x 3'7" (max)

**Bedroom 3** 3670mm x 3330mm 12'1" x 10'11"

**Bedroom 4** 3690mm x 2460mm 12'1" x 8'1"

**Bathroom** 3450mm x 2430mm (max) 11'4" x 8'0" (max)

Please note: Plots 24, 105 and 106 are handed.

Dimensions stated are within 50mm (2") but should not be used as a basis for furnishings, furniture or appliance spaces etc. Dimensions for such purposes must be verified against actual site measurements. Please note the handing of plots may vary from the floor plans shown. Please check individual plot details with our sales team.