

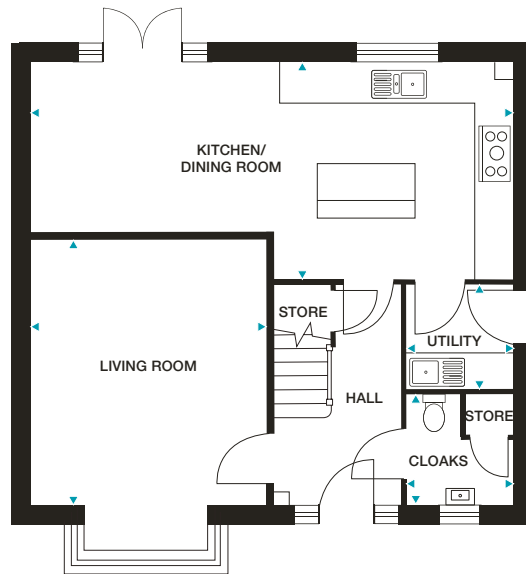
REDBOURNE
4 bedroom home



REDBOURNE

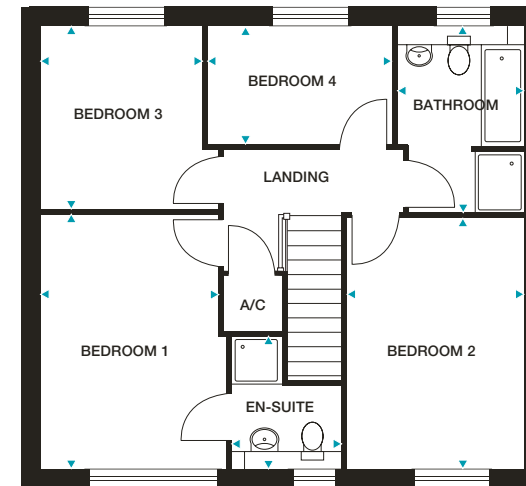
4 bedroom home

Plots 26, 27, 88, 101 and 102



GROUND FLOOR

- Kitchen** 3900mm x 3550mm (max) 12'10" x 11'8" (max)
- Dining Area** 4040mm x 2760mm 13'3" x 9'1"
- Living Room** 4350mm x 3890mm 14'3" x 12'9"
- Utility Room** 1750mm x 1730mm (max) 5'9" x 5'8" (max)
- Cloaks** 1790mm x 1750mm (max) 5'9" x 5'11" (max)



FIRST FLOOR

- Bedroom 1** 4200mm x 3050mm (max) 13'9" x 10'0" (max)
- En-Suite** 2380mm x 1790mm (max) 7'10" x 5'11" (max)
- Bedroom 2** 4110mm x 2910mm 13'6" x 9'7"
- Bedroom 3** 2970mm x 2640mm 9'9" x 8'8"
- Bedroom 4** 3030mm x 1930mm 9'11" x 6'4"
- Bathroom** 3060mm x 2090mm (max) 10'1" x 6'10" (max)

Please note: Plots 27 and 102 are handed.

Dimensions stated are within 50mm (2") but should not be used as a basis for furnishings, furniture or appliance spaces etc. Dimensions for such purposes must be verified against actual site measurements. Please note the handing of plots may vary from the floor plans shown. Please check individual plot details with our sales team.