

TATTENHOE
4 bedroom home

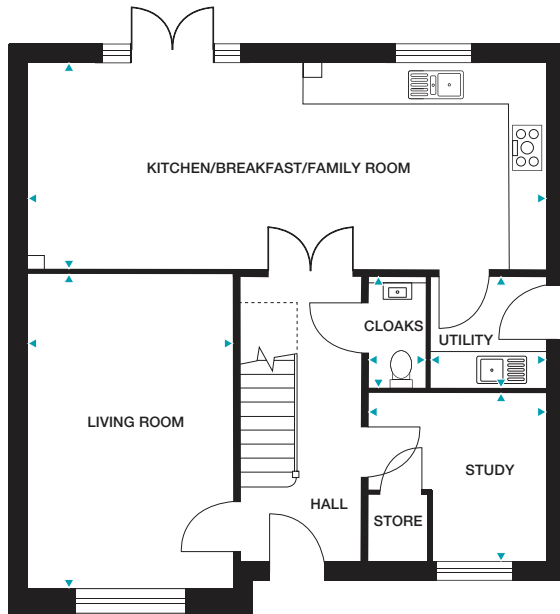


CGIs are indicative only and elevations are subject to change, external finishes and features may vary.

TATTENHOE

4 bedroom home

Plots 16, 18, 22, 23 and 107



GROUND FLOOR

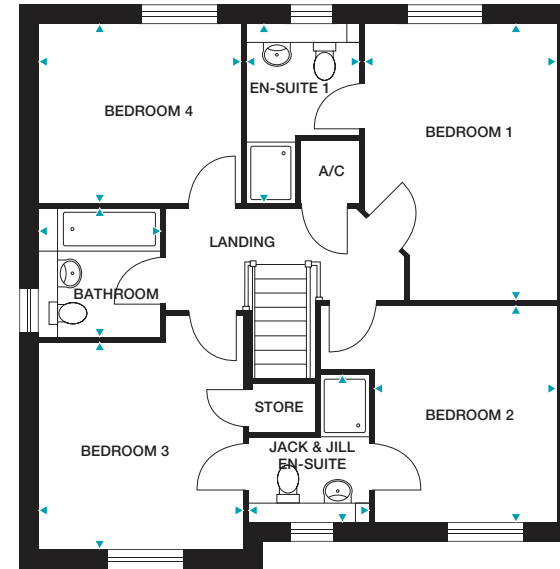
Kitchen/Breakfast/Family Room 8510mm x 3370mm (max) 27'11" x 11'1" (max)

Living Room 5150mm x 3350mm 16'11" x 10'11"

Study 2890mm x 2740mm (max) 9'6" x 9'0" (max)

Utility Room 1870mm x 1800mm (max) 6'2" x 5'11" (max)

Cloaks 1720mm x 930mm (max) 5'8" x 3'1" (max)



FIRST FLOOR

Bedroom 1 4540mm x 3140mm (max) 14'11" x 10'4" (max)

En-Suite 1 2920mm x 1870mm (max) 9'7" x 6'2" (max)

Bedroom 2 3510mm x 3000mm 11'7" x 9'10"

Jack & Jill En-suite 2380mm x 1930mm (max) 7'10" x 6'4" (max)

Bedroom 3 3390mm x 3330mm 11'2" x 10'11"

Bedroom 4 3300mm x 2920mm 10'10" x 9'7"

Bathroom 2150mm x 1970mm (max) 7'1" x 6'6" (max)

Please note: Plot 22 is handed.

Dimensions stated are within 50mm (2") but should not be used as a basis for furnishings, furniture or appliance spaces etc. Dimensions for such purposes must be verified against actual site measurements. Please note the handing of plots may vary from the floor plans shown. Please check individual plot details with our sales team.

**LOVELL
HOMES**